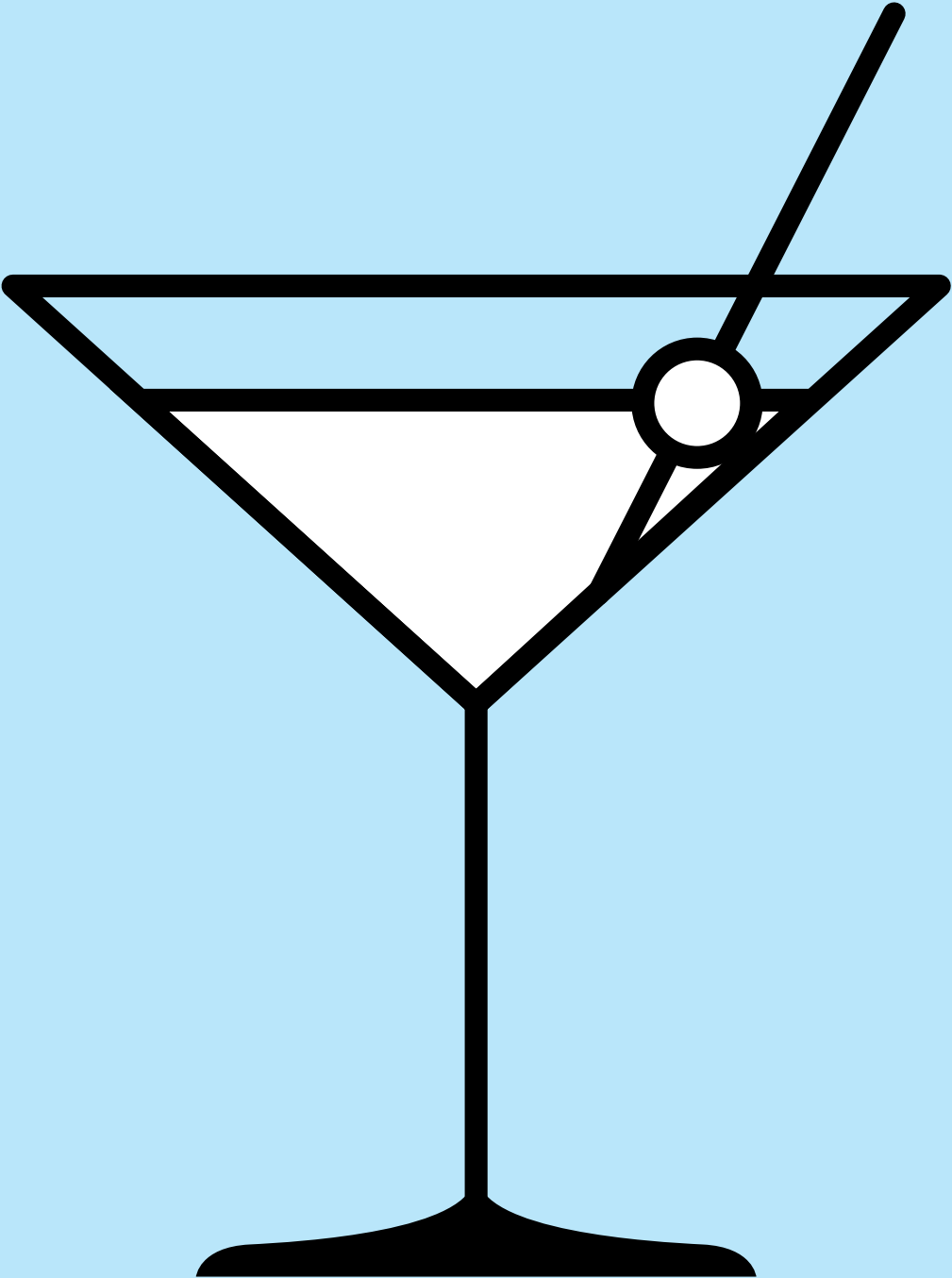


BLUE BATHS



CATERING

VENUES

ENTERTAINMENT



1.
BLUE BATHS

17.
CASE STUDY EVENT

21.
UNIQUE SPACES

30.
WEDDINGS

36.
ENTERTAINMENT

48.
CATERING

- 2. Introduction
- 3. Building Exterior
- 5. History
- 7. Venues Map
- 10. Style, Glamour & Romance
- 12. Unique Spaces
- 14. Juvenile Pool Wedding

- 18. Out of the Blue
- 19. Overview
- 20. Facts

- 23. Venue Capacities
- 24. Juvenile Pool & Lido Lounge
- 26. Lido Lounge
- 27. Blue Baths Tearoom

- 31. Classic Combinations
- 33. Lido Lounge, Wedding setup

- 38. Emerge Group
- 39. Great Gatsby Party
- 41. Rock 'n' Roll Party
- 43. Tenors and the Diva
- 45. Other Shows

- 50. Rolled Pork loin
- 51. Roasted Duck Breast
- 52. Blue Baths Catering
- 53. Degustation Menu
- 54. Appricot Waffle Cones & Macaroons

56.
LOCATIONS

64.
VENUES

74.
SUPPORT SERVICES

77.
KEY PEOPLE

87.
FLOOR PLANS

- 57. Location Capacity Charts
- 59. Lake Tarawera Orchard
- 61. Government Gardens Entrance

- 65. Rotorua Museum
- 66. Government Gardens & Te Runanga
- 67. Rotorua Convention Centre
- 69. The Redwoods
- 71. Agroventures, Off Road NZ

- 76. Event Impressions & AVT

- 79. Jo Romanes
- 81. Natasha Hall
- 82. Trudy James
- 83. Timo Dicker
- 84. Darlene Mohekey
- 85. Tina Franklin
- 86. Ngawiki Clayton

- 87. Level One
- 88. Level Two

Contents



No 2

This heritage listed Bathhouse is located in Government Gardens, Rotorua. Originally opening in 1933, the art deco Blue Baths daringly offered mixed sex bathing for the first time in New Zealand.

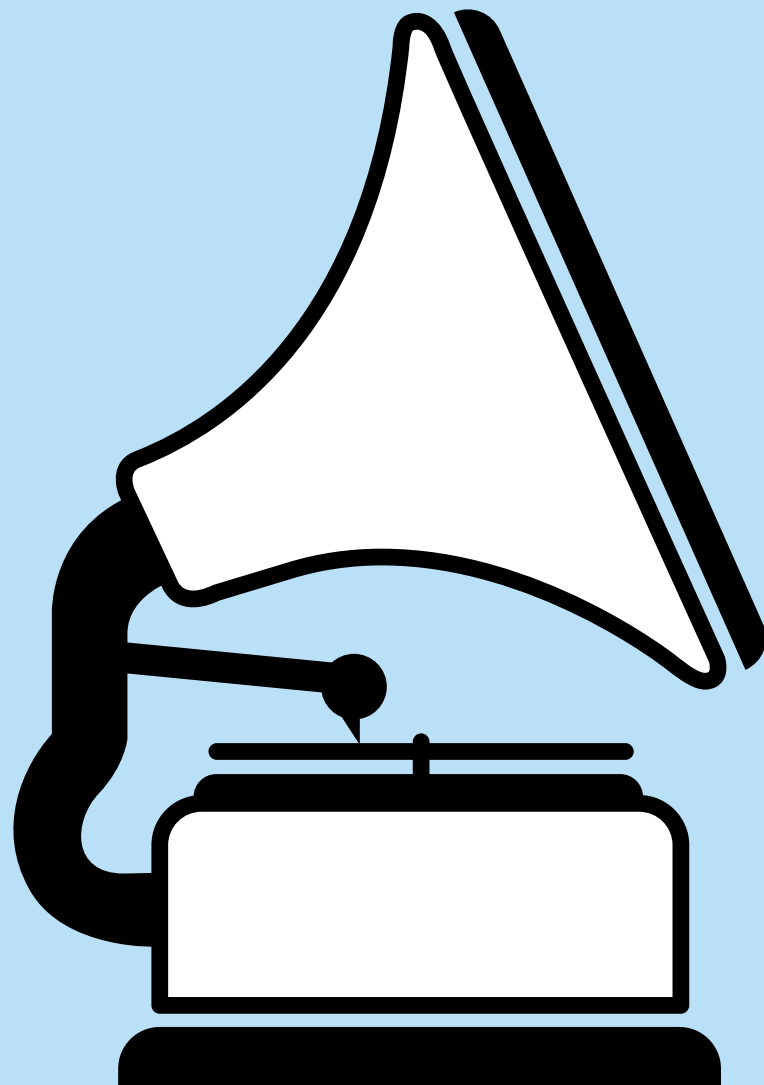
Now stylishly refurbished and the geothermally heated pools reopened, the building is available for private events.

An architecturally stunning building, Blue Baths blends art deco and Spanish Mission design elements to create a versatile and elegant venue. Located in Rotorua's dress circle and described as one of New Zealand's most loved buildings, the baths have been faithfully restored to regain their unique 1930's ambience and are once again the epitome of glamour and style. The elegant Foyer leads to sapphire pools, classic Tearoom, the expansive Lido Lounge and heritage galleries, offering endless possibilities for events of varying size and style.

The Blue Baths event team skilfully orchestrates everything from intimate tea parties to themed extravaganzas both corporate and private, providing specialist catering, entertainment and event management services to a stunning array of venues and alfresco locations across the Rotorua region. Expect the highest quality facilities and superb service dedicated to meeting your every requirement.



HISTORY



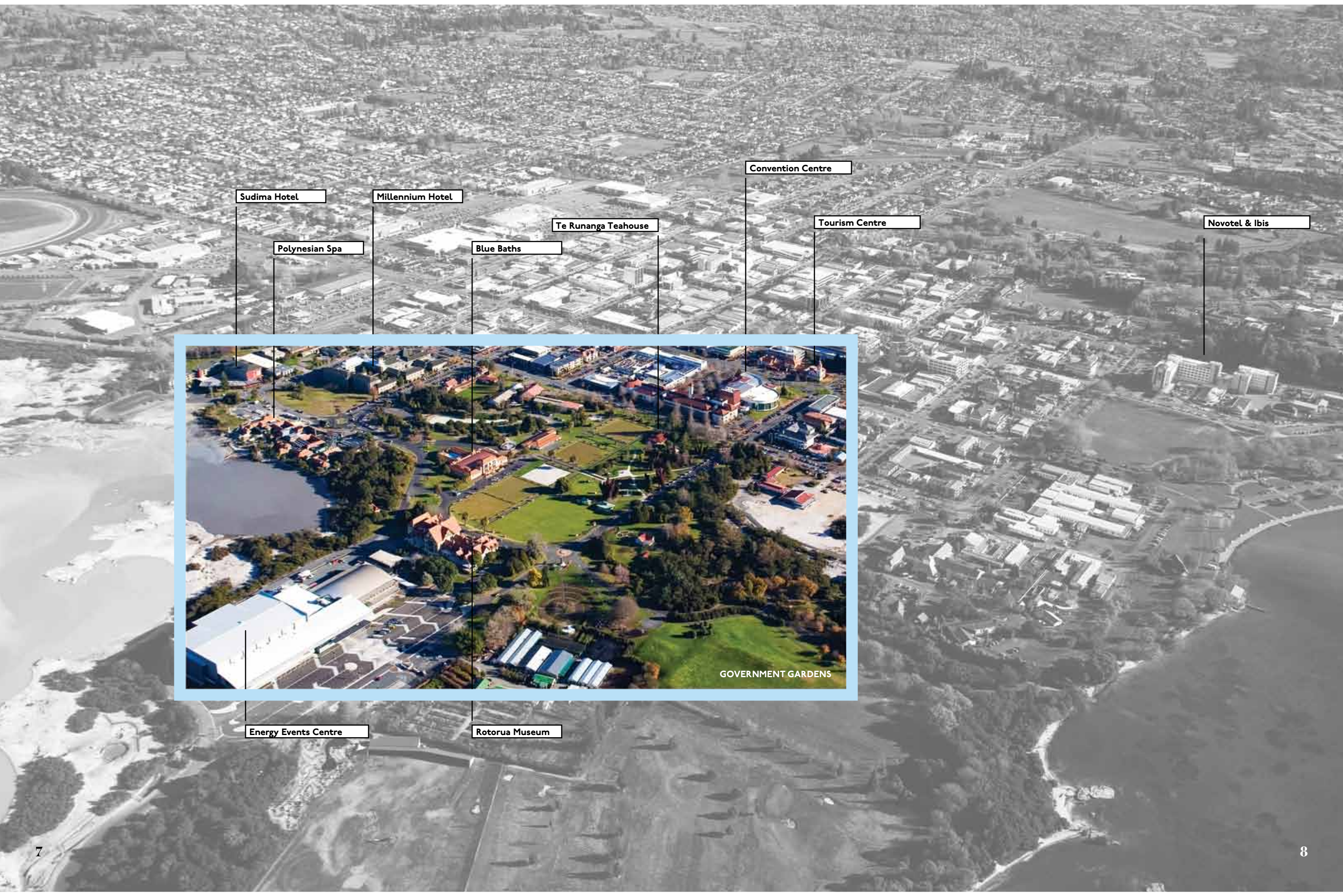
Past

Mixed bathing in liquid light, such was the promise of pleasure used to entice visitors to the newly opened Blue Baths in 1933. Built in classic Spanish Mission style with decadent art deco flourishes, the Baths' lavish design saw visitors flocking in droves to experience the wicked delights of mixed-sex bathing in the warm blue waters; even as the Second World War demanded the Tearooms' conversion into a makeshift military dental clinic.

But government funding increasingly ran thin, and the Baths slid into disrepair. Closed in 1982, the Blue Baths were condemned to a slow decay that endured until 1999, when current lease-holder Jo Romanes and her property developer husband Mike Romanes oversaw the building's painstaking restoration. Blue Baths then reopened on the 21st of December 1999; 68 years to the day they originally charmed the world.

Present

Behind the famous Spanish facade beats the passionate heart of the Blue Baths event management, entertainment and catering teams, where elegance and taste is matched by experience and expertise. Browse the following pages and immerse yourself in a rich menu of venue locations, catering options and stunning entertainment packages, from which we create unforgettable events meticulously tailored to our clients' budget, taste and specifications.



Sudima Hotel

Millennium Hotel

Te Runanga Teahouse

Convention Centre

Tourism Centre

Novotel & Ibis

Polynesian Spa

Blue Baths



GOVERNMENT GARDENS

Energy Events Centre

Rotorua Museum



No 12

Explore the possibilities our stunning array of unique heritage venues offer within the internationally renowned thermal region of Rotorua, New Zealand. Whether seeking inspiration for gala dinners, weddings, theme nights, partner programmes, conferences, meetings and corporate events that can be built around innovative entertainment options, discover The Blue Baths old-world style and gracious hospitality.

Historic Venues



Foyer Bar





17

OUT OF THE BLUE

A CASE STUDY EVENT

EVENT	MEETINGS 2011 “OUT OF THE BLUE” DESTINATION DINNER
Guests	250 Australian & NZ event organisers, tourism industry personnel and media
Theming	Event Impressions
Venue & Catering	Blue Baths - 7 course degustation dinner
Entertainment	Nine-piece swing band on a floating stage over the pool



Seven long tables of thirty five guests were each served seven courses with military precision by tuxedo-clad waiters and waitresses costumed à la Audrey Hepburn in Breakfast at Tiffany's.

The scene was set with Lido Lounge tables dressed in 60's style blue velvet, silk and satin. Glittering centrepieces adorned the tables, and chandeliers sparkled from above. Describing the venue, setting, service and food as "simply amazing," guests waxed lyrical about the innovative seven-course degustation menu, the beautifully dressed historic Spanish Mission-style venue and the great brassy sound of the 9-piece big band.



tuxedo-clad waiters and waitresses costumed
à la Audrey Hepburn in Breakfast at Tiffany's.



UNIQUE SPACES



VENUE	BLUE BATHS			
LOCATION	GOVERNMENT GARDENS, ROTORUA			
CATERING	BLUE BATHS			

CAPACITY	AREA (M²)	THEATRE	COCKTAIL	BANQUET
Lido Lounge	600	500	550	360
Juvenile Pool	400	/	120	/
Pool — Marquee Floor	400	200	300	200
Foyer & Gallery	150	/	150	60
The Tearoom	120	100	150	80
Garden Marquee	600	450	600	450

Lido Lounge & Juvenile Pool

The Lido Lounge was once Blue Baths’ Adult Pool, and the old signs and diving board platforms linger to provide a visual reminder of the area’s glamorous origins.

Now filled in and protected by a high ceiling, the Lido provides an expansive setting for unique events. For additional space (and a grand vista) the trellis wall separating the Lido Lounge and the pools can be opened, creating over 1000 square metres of event space and an unforgettable atmosphere. Think pre-dinner drinks around the fountain at sundown, with steam rising from the geothermally heated waters; or a romantic starlit wedding in the Lido Lounge, with floating candles sparkling from the Juvenile pool beyond.



No 27

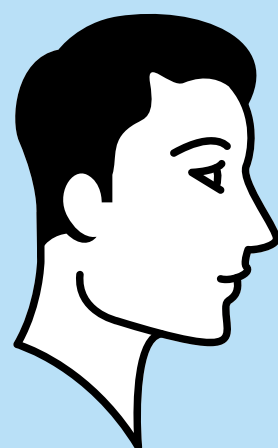
The Tearoom



The Tearoom provides a fabulous venue for an intimate dinner, cocktail party, seminar or product launch. It is also well known as an exclusive wedding and special occasion venue.

The Tearoom, which has been returned to its former elegance with loving attention to detail, is accessed from The Foyer, via the lift or by a sweeping Art Deco terrazzo staircase. Balconies can be accessed through ten sets of French doors, and the area provides splendid views of the Government Gardens. Visitors are awed by The Tearoom with its high totara beamed ceiling, circular fan lights, cork tiled floor, kentia palms, piano, and replica tables and chairs.





WEDDINGS

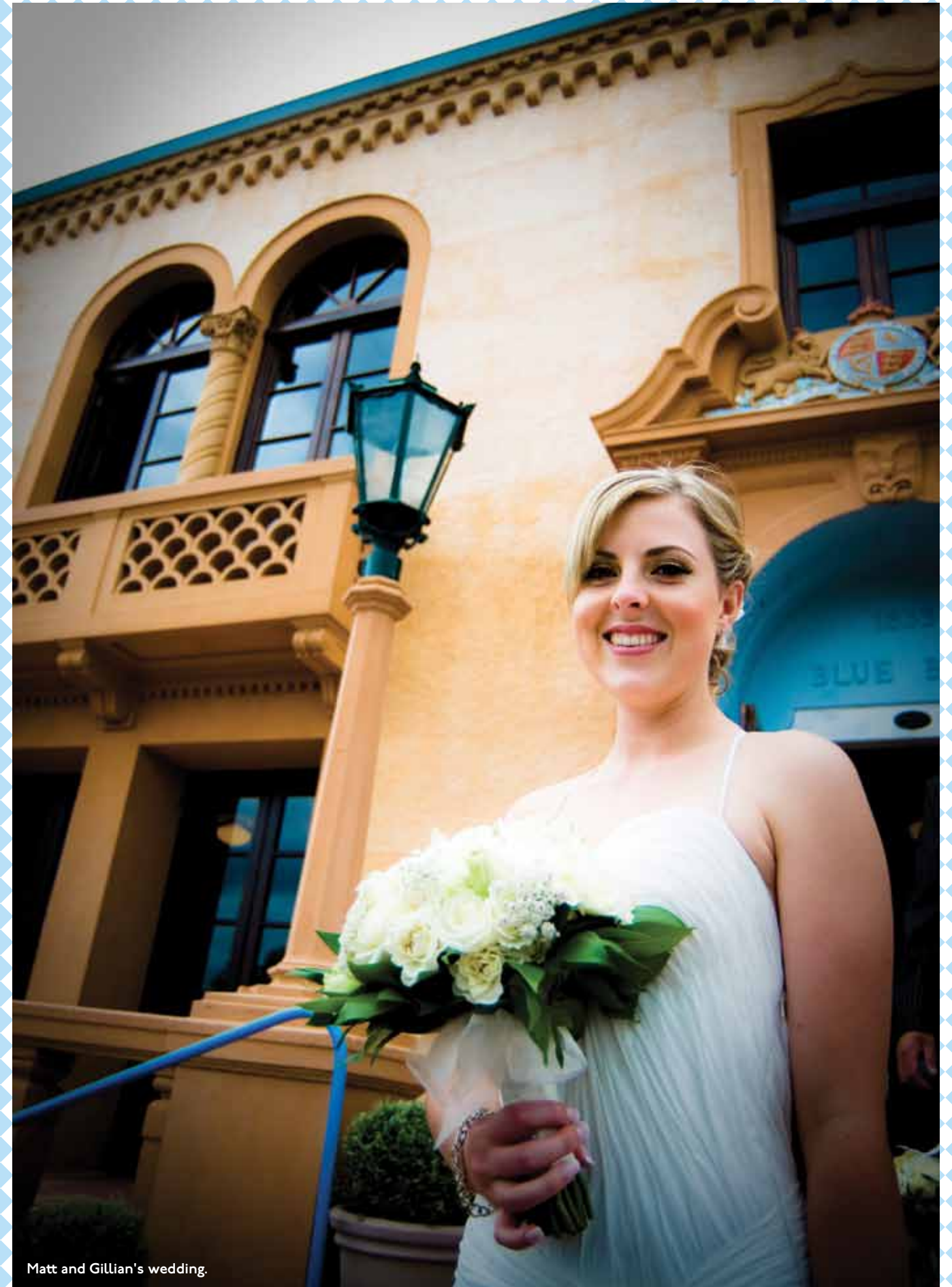
No

31

Classic Combinations

The epitome of sophistication, style and romance in New Zealand since it first opened in 1933, the heritage-listed Blue Baths are where elegance and tradition meet meticulous planning and fresh, innovative style. At Blue Baths, sensational menus are planned to clients' utmost specifications, and an exquisite in-house array of gorgeous table settings, fine linen, chair-covers and unique centrepieces are on hand to custom-style each event.

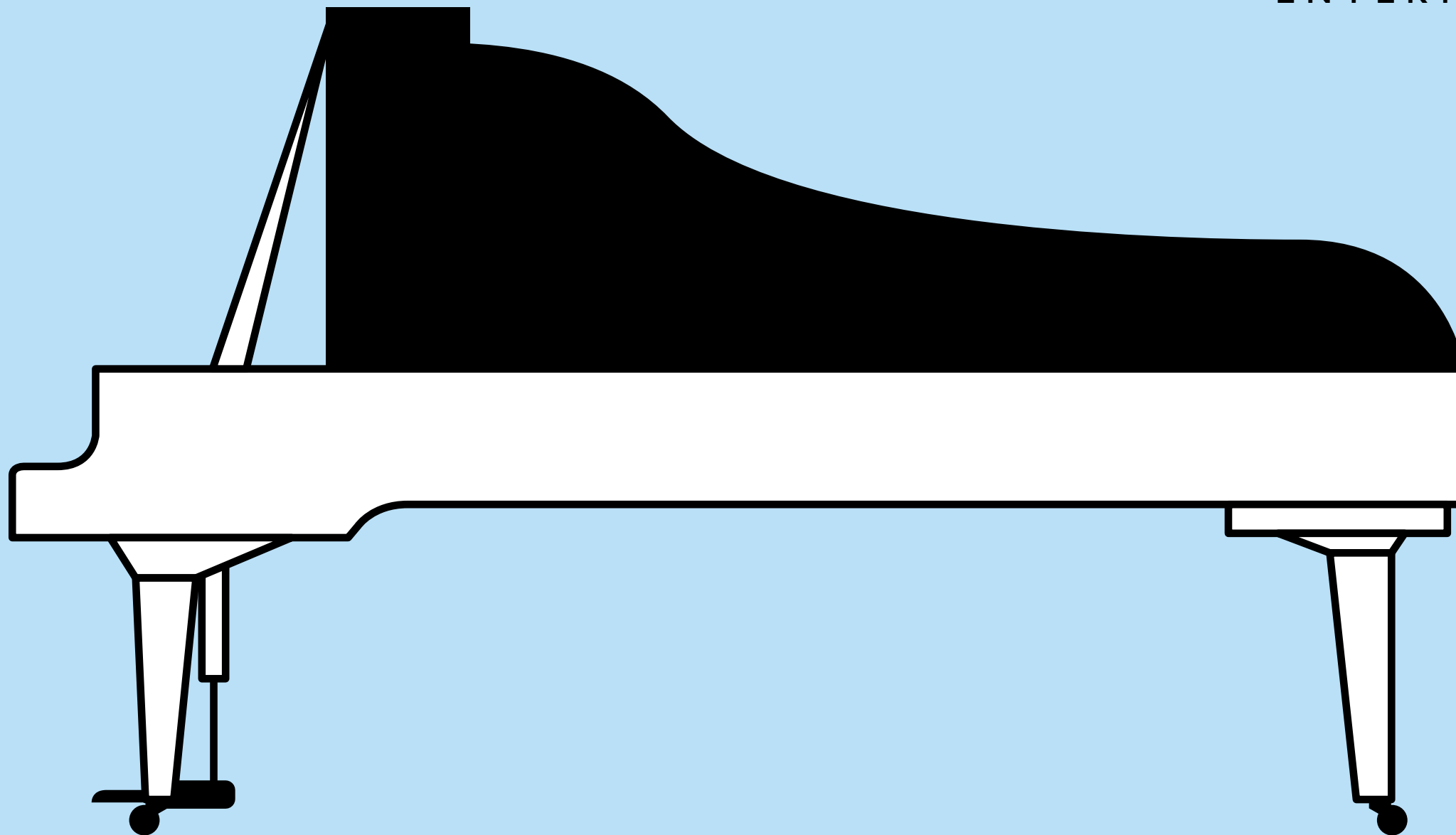
Our depth of experience in the local wedding industry means we recommend and collaborate with only the most reputable of regional florists, photographers, cake-makers, celebrants, hoteliers, entertainers, car-hire and decor providers. Assured that every last detail is impeccably attended to, couples are able to relax and let the elegance of art deco arches and the romance of sapphire pools provide the perfect backdrop to their perfect day.



Matt and Gillian's wedding.



ENTERTAINMENT



Music and
passion are
always in
fashion.



Blue Baths Emerge Entertainment pools the talents of some of the crème de la crème of the NZ performing arts scene. Having a group of professionally distinguished and highly experienced dancers, singers, musicians, comedians, writers and actors on our books enables us to offer clients unforgettable evenings with entertainment tailored to individual tastes, budgets, and even industry genre. Commission a customised feature specific to your industry or select from our range of existing shows – then sit back and relax whilst our polished professional performers take the stage.

No 38

“

Thank you so much for an absolutely fantastic evening at the Baths. The dinner was the total highlight of our conference and our delegates are still calling and emailing to thank everyone. Your entertainment was incredible!! A fabulous night and thanks for all the great service prior to the event to ensure the evening ran like a dream. I would have no hesitation in recommending the Baths to anyone looking for an unforgettable night.

Hope to work with you again in the future!

”

Jill
Genetic Technologies









Rocky Horror Glam-Rock Revue

Awaken your inner Frank N Furter with a night of cult comedy, songs and dancing.



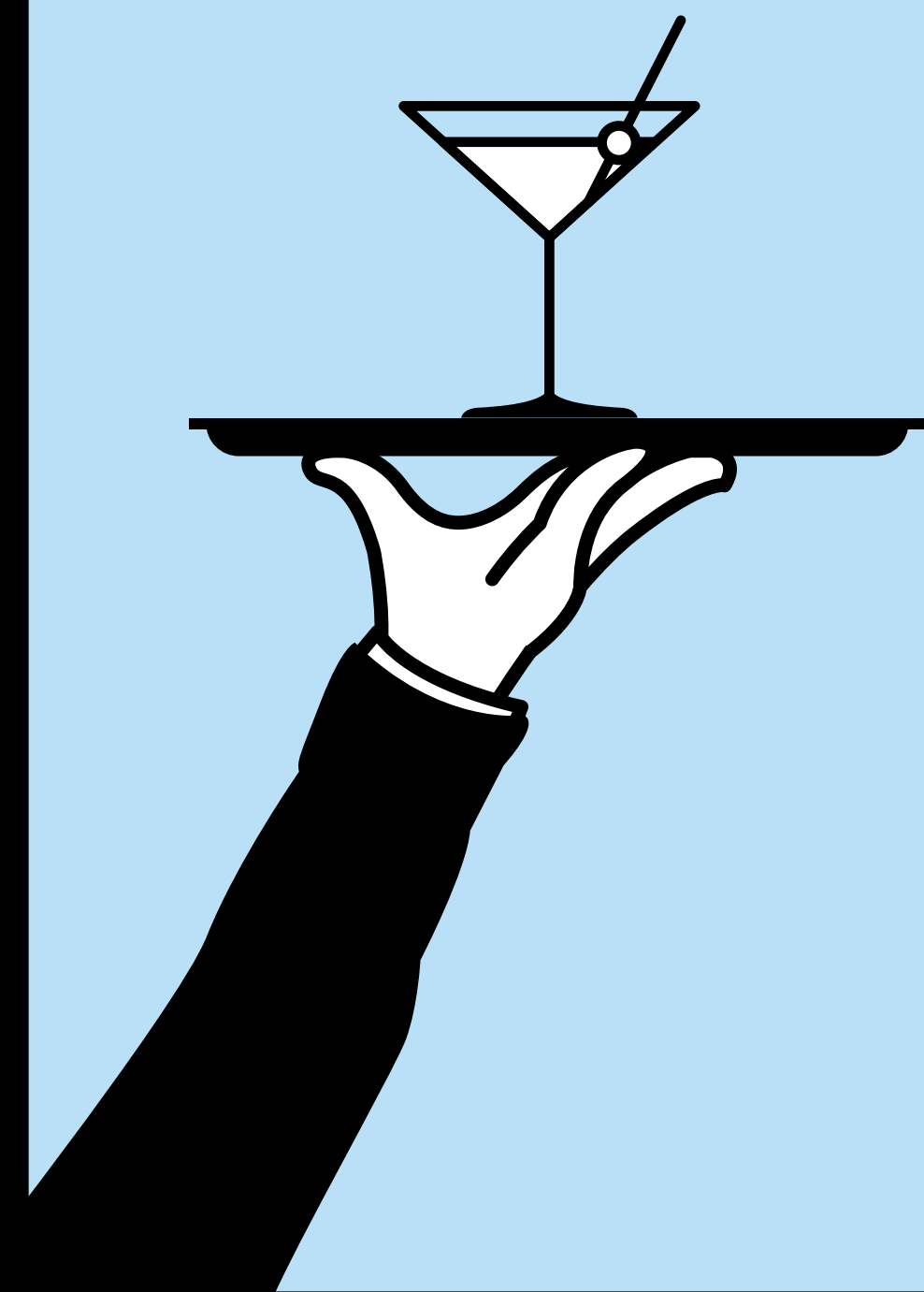
80s Pop Party

Dust off your leg warmers, tease up your hair and roll out your muscle shirt or acid wash jeans to wear because we're going back to the totally awesome Eighties!

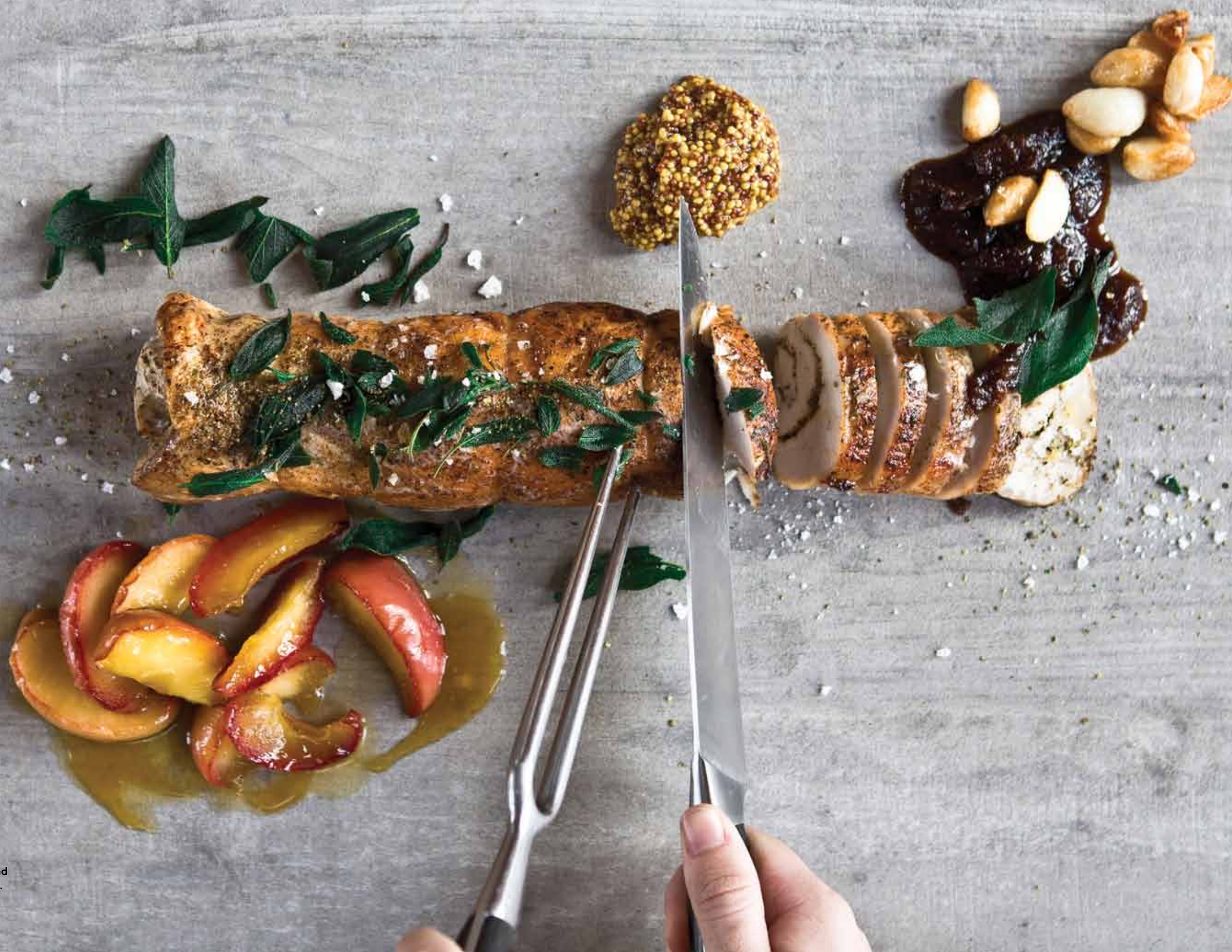


90s Party Gettin' jiggy wit it

Get down with all the phat beats and fresh rhymes of the most disastrous fashion decade ever; the fully fly Nineties!



CATERING



Fennel rolled pork loin with roasted garlic, sage and caramelised apples.



Grilled juniper duck breast with beetroot reduction, lapsang souchong cream and celery greens

Exquisite food and exceptional service are the hallmarks of Blue Baths catering.

We combine a diverse range of venues and pristine alfresco locations with an extensive menu of catering options to create exclusive and unique occasions. Think breakfast at a lakeside retreat, lunch under the majestic Redwoods of Whakarewarewa, or the magic of a moonlit bush barbecue at Off-Road New Zealand. From corporate extravaganza to intimate wedding; menus and management can be tailored to suit every budget and style.

Competitively priced day conference packages and packed lunches are also available.

“

Thank you for all of your work in preparation for our wedding. Your local knowledge & helpful advice was very much appreciated. Blue Baths was a magical location for our wedding. The facility & staff were out of this world! Our guests raved (and still do!) about our wedding, saying apart from their own, it was the best wedding they have ever been too. So many people have talked to us saying how everything was perfect; the location, incredible food, band & venue. Thank you for all of your efforts on our special day.

”

Emma & Ian

Degustation Menu

1

Mini walnut cannelloni
with roasted garlic, thyme puree, beetroot vinaigrette

2

Seared sesame duck breast
with jasmine syrup, crisp mustard leaves, juniper royale

3

Dill & palm sugar cured salmon
grilled miso rice cake, celery cream

4

Eye of round lamb
alpine merino with salted lemon crumble,
confit kumara, mild harissa

5

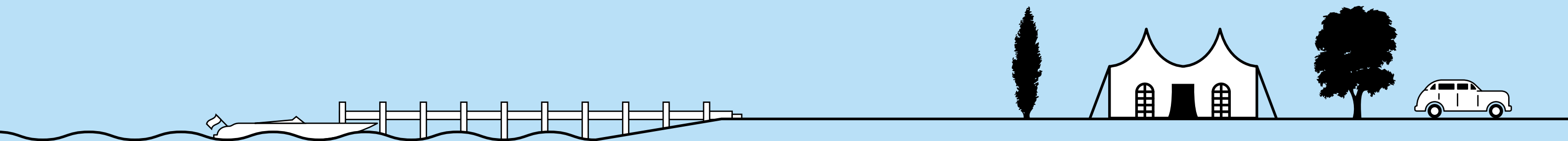
Roasted pineapple mousse
on crispy daquoise sponge with caramel banana Macaron,
vanilla crème fraîche sabayon, almond florentiene shards

6

Honey & cheese
local Pepperino sheep cheese with Rata honey,
green pepper wafers



LOCATIONS



No 57

Those wishing to venture outside the Baths need only speak to our in-house event management team, who have a wealth of experience in managing weddings and corporate events at a selection of exquisite locations.

Blue Baths regularly curates events around Rotorua, including at the magnificent Redwoods at Whakarewarewa Forest, a range of local lakes, and throughout the neighbouring 50 acre Government Gardens, its tranquil beauty offering a superb setting for wedding ceremonies, receptions and photographs.

VENUES	LOCATION	CEREMONY	RECEPTION
The Tearoom	Blue Baths	130	80
Lido Lounge	Blue Baths	500	360
Garden Marquee	Government Gardens	500	400
Te Runanga	Government Gardens	120	40
Band Rotunda	Government Gardens	400	/
Rotorua Museum	Government Gardens	/	80
Convention Centre	Rotorua CBD	600	500
The Stage	Convention Centre	200	150
Lakeside Marquee	Lake Tarawera or Rotoiti	500	350
Blackhouse on the Point	Lake Okareka	150	120
Longfords Farm Marquee	Lake Okareka	200	200
Te Manu Lodge Marquee	Paradise Valley	200	300
Ataahua	Pyes Pa Road	150	150
Black Swan Luxury Lodge	Kawaha Point	60	60
The Redwoods	Whakarewarewa Forest	300	250

The Redwoods

At Whakarewarewa Forest, Rotorua.



Tim & Kristelle



Madeline & Earle (lakeside wedding)

Lake Tarawera

No 60

“

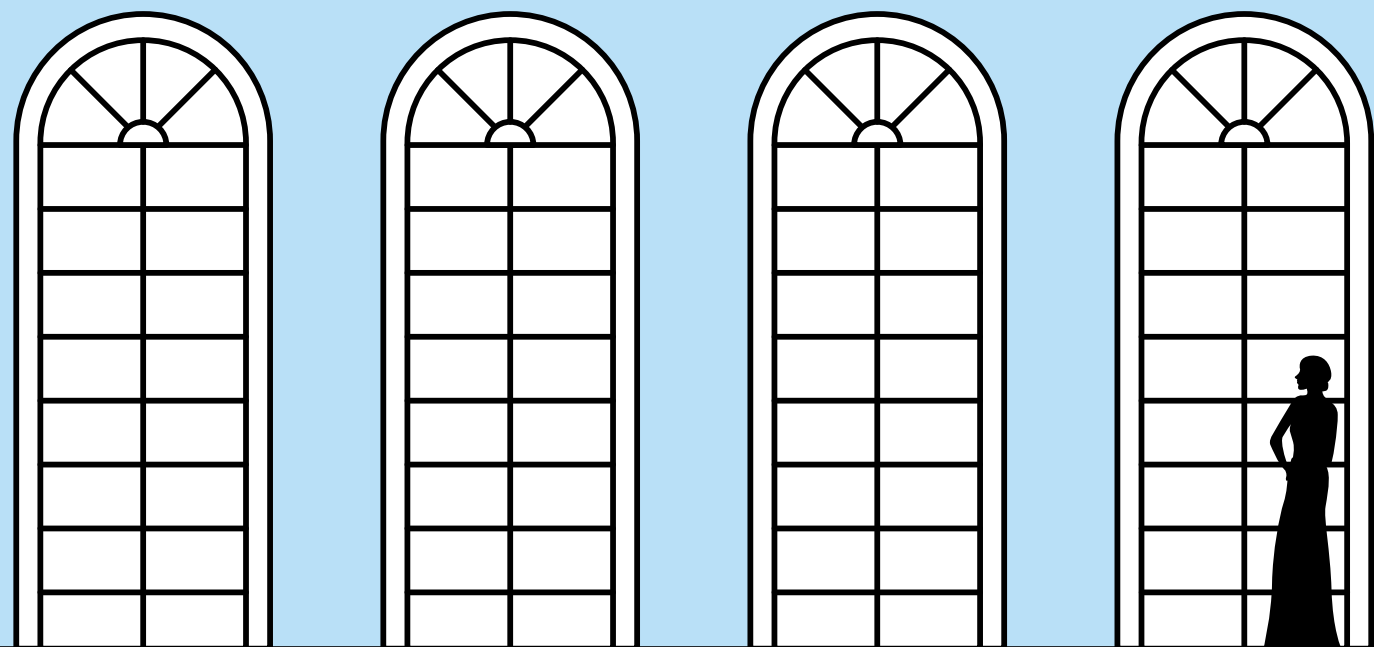
Thank you so much for the amazing job that you and the team did for our wedding. It was absolutely wonderful. Everyone raved about the food and what an amazing job was done to deliver such a high standard for so many people. Thanks for all your help & advice along the way, it was much appreciated! All the best.

”

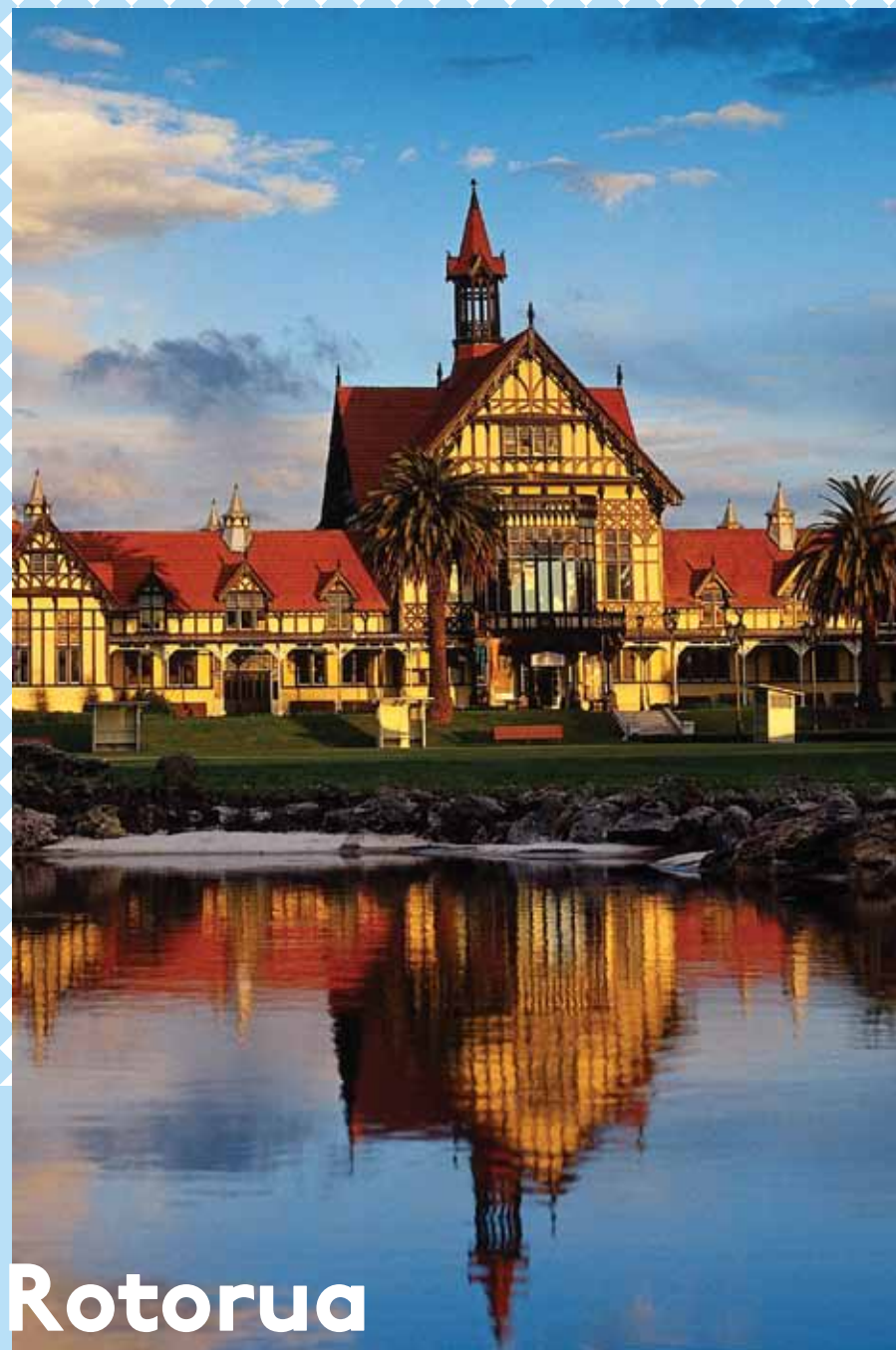
Claire & Dane
Lake Tarawera







V E N U E S



Rotorua Museum

The Elizabethan charm of the Bath House building and the tranquil setting of the Government Gardens will leave lasting impressions on your guests. Choose from three designated function spaces to host an event steeped in history and sumptuous architecture. Likened to the ballrooms of old, the two-level Bay Trust Pump Room retains its original Elizabethan styling, with high ceilings, detailed plaster mouldings, and finely crafted native timber fixtures and joinery. Perfect for occasions both intimate and expansive, its outstanding acoustics make the room burst to life with vocal or instrumental entertainment.

The top level, open-air Viewing Platform allows guests to enjoy panoramic views of the gardens and Lake Rotorua while partaking in exclusive cocktail functions, breakfasts or dinners. Delightfully quaint, The Verandah and Old World Bath House are private and cool in the heat of summer, and lend themselves to long balmy evenings of stylish conviviality. Take a step back in time and meander through the Museum's early 1900 spa exhibitions and experience the story of The Great South Seas Spa, as the Bath House was once known. Available for dining or cocktail events.

Government Gardens

Originally known as Paepaekumana, the picturesque Government Gardens are situated on the geothermal lake's edge in downtown Rotorua.

The fifty-acre site is of legendary and historical importance to local tangata whenua, who in the late 1800s gifted the land and its mineral springs to the Crown "for the benefit of the people of the world." Today the Gardens house a number of attractions, including the Rotorua Museum, Te Runanga Teahouse and historic Band Rotunda, Rotorua Energy Events Centre and the Blue Baths themselves. The Gardens also provide opportunity for teambuilding and gourmet safaris amongst the 150 flowerbeds, and petanque, lawn bowls and croquet lawns.



Te Runanga Tea House

Built in 1903 in the heart of Government Gardens, Te Runanga Tea House is one of the most nostalgic and attractive event venues in Rotorua. Its unique character and central location make it a favourite for incentive and executive dinners, retreats, cocktail events and weddings.





A dining venue with dramatic possibilities.

The Rotorua Convention Centre

Located on the cusp of the Government Gardens and just minutes from The Blue Baths and major city hotels, the Rotorua Convention Centre is a convenient and versatile venue designed specifically for hosting conferences, exhibitions and trade shows. Its banquet room, concert chamber, mezzanine floor, multifunctional foyer and four breakout rooms ensure clients have access to a wide range of venues suited to events of varying size and style.

The Stage

Imagine the possibilities of hosting an event where imagination has no bounds; where your guests will literally take centre stage, and where impressive rigging and lighting systems allow for astonishing program enhancements that range from suspended floral arrangements, themed backdrops and dramatic curtain calls to spotlighting and unexpected entertainment appearances. Create an unforgettable event at The Stage, where the possibilities are limited by imagination alone.



The Redwoods

At Whakarewarewa Forest

Blue Baths' team has a long history of catering blue-ribbon events at the Redwoods venues, where the stunning natural beauty and peace of these mighty forest giants offer a calm oasis for any occasion, only a few minutes from the Rotorua CBD.

The most spacious and accessible designated event area within the forest has a permanent sail canopy ensuring an all-weather venue; a spectacular setting appropriate for every occasion – from product launches, weddings or grand gala dinners.



“

Thank you so much for all the hard work you and your team put into our function at the Redwoods. Everyone had a wonderful time and we have had numerous comments about the venue, food and entertainment. Once again it has been an absolute delight to deal with you.

”

Debbie
Trevelyan

Agroventures



Energize and inspire your delegates with a few hours' exclusive use of the Agroventures adventure centre. Replete with a surround sound outdoor entertainment area and BBQ facilities, Agroventures has the adrenalin-filled activities needed to invigorate your group and the perfect setting for regrouping and refueling afterwards.

The iconic Agrodome has a number of venues perfect for a rural take on a corporate event. Choose from the immense indoor Dome, the spectacular outdoor Vines Dining area, the rustic Barn or the intimate Shearing Shed, and select theming and cuisine to match. Drawing on New Zealand's famous fresh produce, Blue Baths chefs can deliver everything from a casual barbecue with fireside flair to a more formal corporate menu. Top off the event with a guest appearance from Agrodome's famous sheepdogs, who herd delegates from your coach to the venue.

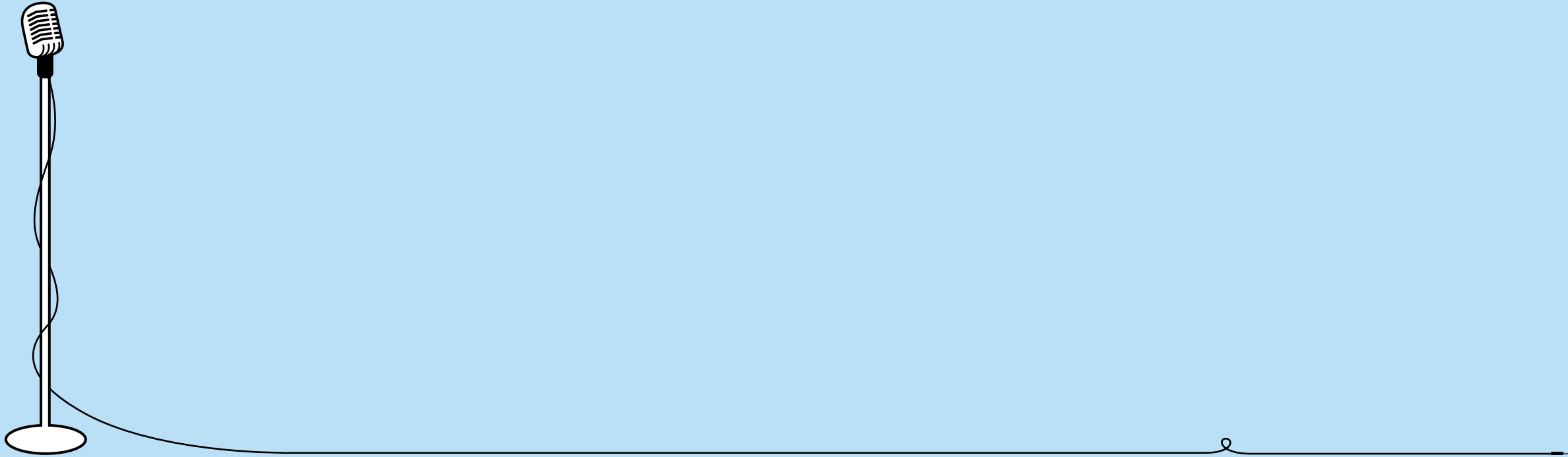
No 72



Off Road New Zealand

Relax & replenish after a day packed with unforgettable off-road adventure at The Native Bush Camp, where delegates can return to a wisp of wood smoke and the aroma of prime cuts on the grill. Think salads galore in summer, and hearty winter fare when the weather turns cooler. Blue Baths team's authentic Kiwi cuisine will leave no appetite unsatisfied.

SUPPORT SERVICES





© Event Impressions

Event Impressions

Rotorua based Event Impressions is recognised as one of New Zealand's most imaginative and accomplished creators of corporate, gala and special events. This talented event design team can transform any venue into a work of artistry in one seamless journey from concept to creation.

AVT

Creating an event involves a range of technical skills and the access to the right equipment. Rotorua based Audio Visual Techniques has been on the cutting edge of technology for more than 25 years. If you can imagine it, they will provide the technical ability to make it happen.

Rigging, Lighting, Audio, Production,
Video and Pyrotechnics

No



KEY PEOPLE





Jo Romanes Managing Director

Jo Romanes is passionate about Blue Baths; the building, the business and the people. Seeing the company evolve has been the pay-off for Jo who was involved throughout the restoration process and re-opening in 1999. With over 20 years in hospitality and tourism behind her, Jo still gets a kick from creating innovative new events, themes and entertainment options – and relishes quiet times walking her dog Rodger at home at Lake Tarawera.



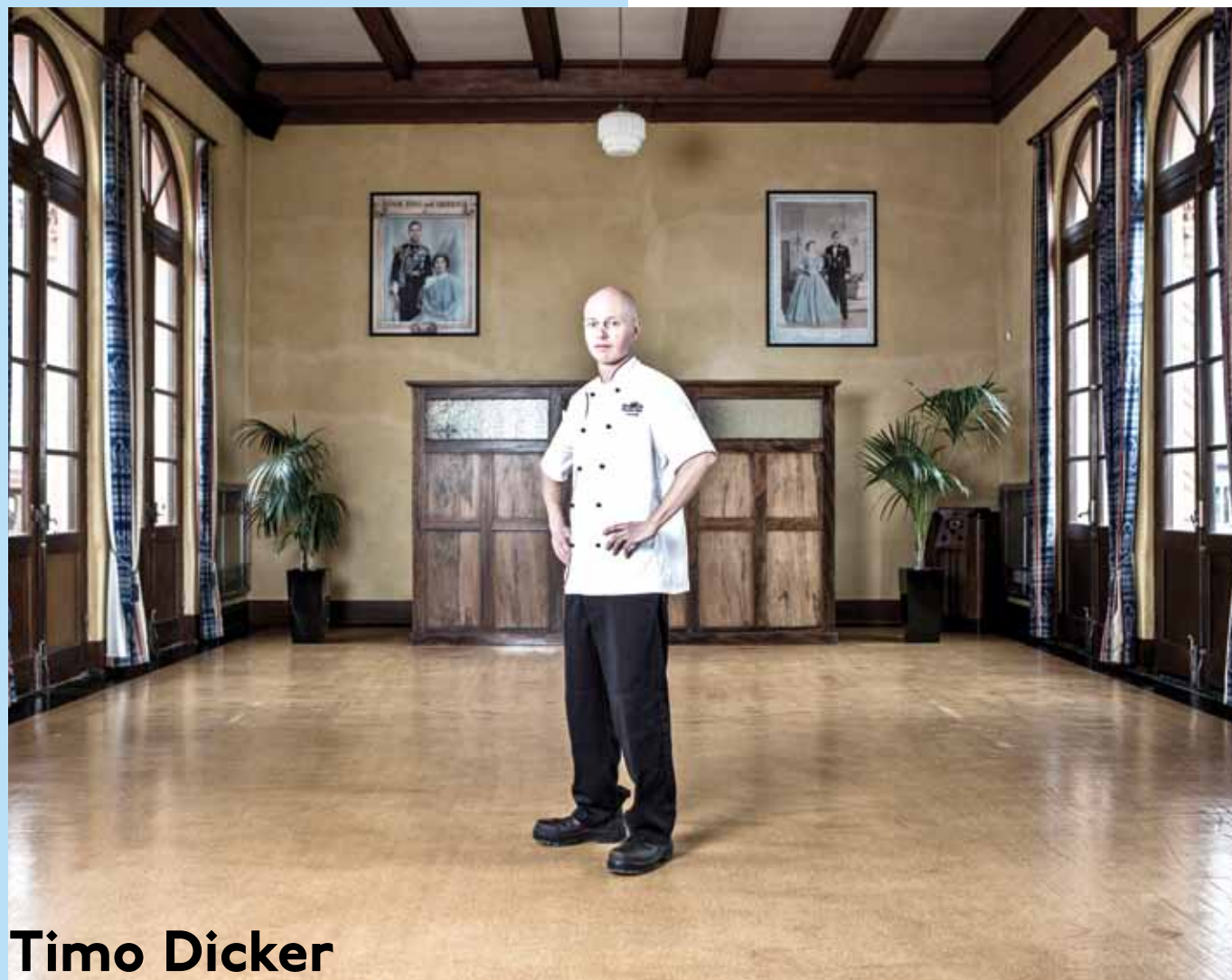
Natasha Hall
General & Operations
Manager

Natasha Hall is an organisational whizz, backed with a Diploma in Hotel Management backed by 16 years of industry experience. Armed with a real desire to surpass client expectations and a legendary eye for detail, Tash has a true appreciation of the needs of brides - having recently held her own wedding ceremony at the Redwood Forest and reception at Blue Baths! Downtime is spent walking, gardening, wine-tasting and pursuing her love of travel.



Trudy James
Sales Manager

Originally from Auckland Trudy has adapted to the Rotorua way of life. Her love for the lakes and her husband (a Rotorua local) has seen her permanently take up residence here. Having studied Fine Arts, Trudy fell into hotels and moved quickly within varying management roles. Her experience gained from this attributes to her learned ear and highly skilled attention to detail. Trudy passions include the outdoors, most ball sports, wining / dining, spending time with family and friends and SHOES. Favourite quote, by Imelda R Marcos 'I never owned 5000 pairs of shoes, I only owned 2500'



Timo Dicker
Executive Chef

Blue Baths' executive chef Timo Dicker has nearly 20 years of diverse culinary experience which has evolved into a cooking style he enjoys. For Timo finesse is key and he creates clear, simple, high-quality menus utilising the best of New Zealand's produce. Determination, passion, and the support of a dynamic team drive him to continually hone his craft and create unique takes on established dishes and flavours. When not in the kitchen, Timo enjoys travel, photography, and getting out and about on his mountain bike.



Darlene Mohekey
Creative & Musical Director

A talented actress, songstress, voice-over artist, writer, impersonator and general diva extraordinaire, Darlene's credits include numerous theatrical productions and three series on TVI's 'Facelift'; a political satire in which she played 22 different characters including Helen Clark, Suzanne Paul, Nicky Watson and Jason Gunn. Darlene won the NZ Chapman Tripp Award for Best Supporting Actress in 2010 for the Circa production of 'Shipwrecked! An Entertainment'. Darlene enjoys the diversity and creative freedom of her role at Blue Baths, with original shows and entertainment segments constantly being developed for clients' events. Darlene enjoys DIY home building projects and spending time with family and friends in her hometown of Levin.



Tina Franklin
**Administration &
 Event Co-ordinator**

Administration Officer Tina Sargent takes care of bookings, administration, accounts and reception. Holding a Certificate in Hotel Information, Tina formerly worked at the Novotel & Ibis Rotorua (as part of the Executive Office Team looking after the GM and Human Resources) and now particularly enjoys the intimacy of Blue Baths. The beach, family, reading, and socialising are high on Tina's priority list away from work.

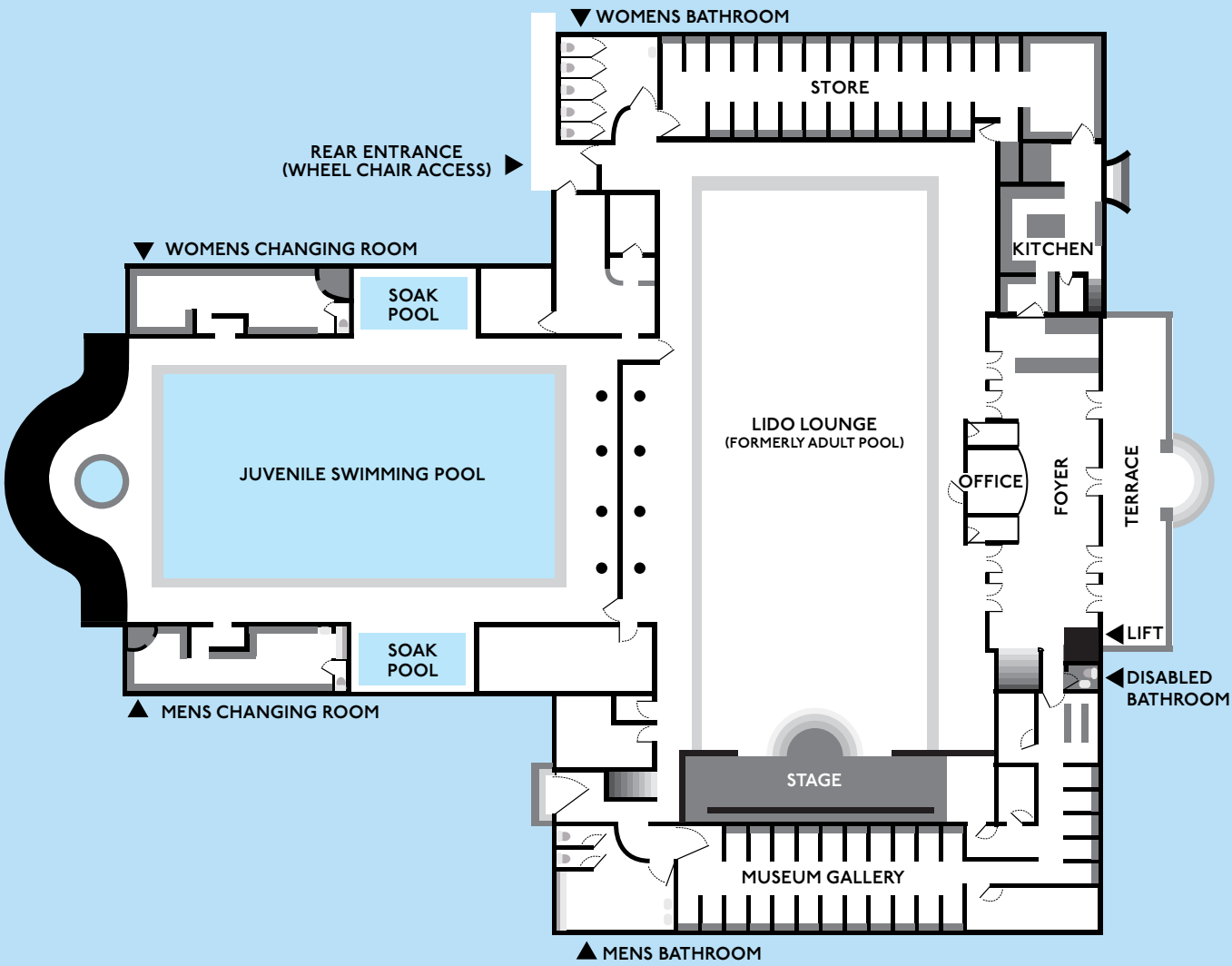


Ngawiki Clayton
**Front of House
 Manager**

Ngawiki holds a Bachelor of Maori Performing Arts majoring in dance and has been in the hospitality and tourism industry since 1995, working for top cultural attractions locally and representing NZ overseas as both a performer and teacher. Wiki leads the team on the floor by example, with consummate professionalism, quiet enthusiasm and always a twinkle in the eye. Mother and wife of two awesome boys, Wiki loves spending free time kicking back with the family.

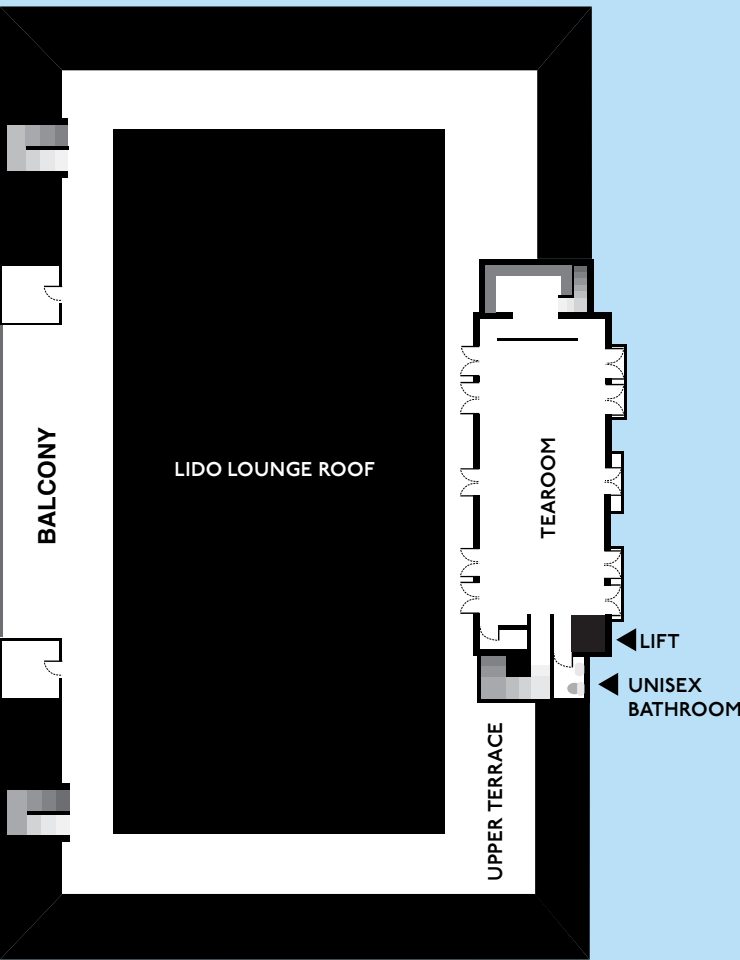
GROUND FLOOR

NORTH ➡



LEVEL ONE

NORTH ➡



No

89

Credentials

**We wish to acknowledge the inclusion
of stunning photography by:**

Vinesh Kumar
Graeme Murray
Brad Boniface
Tracey Robinson
Jill Pascoe
Bill Hedges

Contact

**The Blue Baths,
Government Gardens,
Rotorua, New Zealand.**

www.bluebaths.co.nz
Info@bluebaths.co.nz
+64 7 3502119

